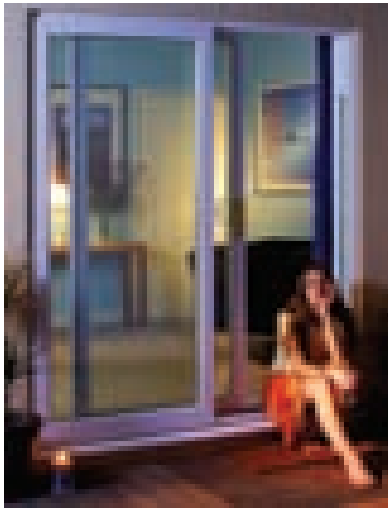


Relax in and outside
your home



 **PatioMaster**[®]
IN-LINE SLIDING PATIO DOOR



Space and Light

Across the country thousands of people enjoy their homes more, thanks to PatioMaster patio doors. Our products create new possibilities. Use them as exterior doors to add light and air to your rooms, pool house or summerhouse; or as efficient interior room dividers to make the best use of your space.

With their large glazed areas, elegant low profile frames and range of quality finishes, our doors are the ideal finishing touch, complementing your home perfectly.

PatioMaster doors are designed to meet the needs of the most discerning home owner, manufactured by the UK market leaders to the very highest specifications and security standards.

Open your mind to new possibilities

Express your own individual style with our range of colour and finish options. Select from a range of finishes including white, woodgrain or coloured.

Antique Oak	Mahogany	Rosewood	White	Ice Cream
Chartwell Green	Slate Grey	Gale Grey	Beck Brown	Steel Blue
Dark Red	Dark Green	Siena PR	Siena PN	Barley Water
Willow Green	Vanilla	Hazy Grey	Irish Oak	

The very highest levels of security are achieved through multiple locking points and a built in 'anti-jacking' system that ensures the door cannot be lifted off from the outside.



- A** Slim stepped 86mm outer frame reduces plaster cutback and enhances visual appearance
- B** Internal sliding panels for added security
- C** Your choice of White, Black, Gold or Chrome handles
- D** White, wood grain and colour finishes
- E** Low track, low threshold system (optional)
- F** Lowline gasket co-extruded to sash
- G** High performance 28mm glazing as standard
- H** 3 chamber sash for maximum thermal efficiency and strength
- I** Six point locking system for outstanding security
- J** Concealed fixings (no ugly screw heads)
- K** Midrail option with letterplate for front entrances
- L** Option of a shaped sash to complement sculptured window system





 **PatioMaster**[®]

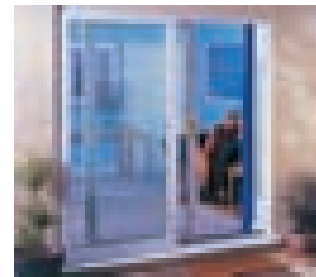
IN-LINE SLIDING PATIO DOOR

You and Your Home

PatioMaster patio doors are designed and manufactured by specialists. It's all they do and they're constantly developing new features - so that you get the best, most advanced product on the market.

PatioMaster patio doors are the most elegant doors money can buy. Entirely made-to-measure (of course), you can rest assured that these doors have been developed and intensively tested under strict quality control standards. Once installed in your home, they will give high performance with minimum maintenance for many years to come.

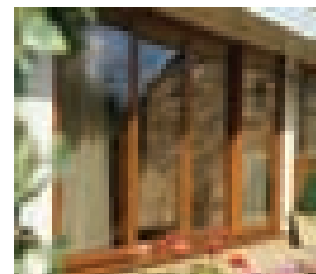
With 2, 3 or 4 pane options, in-line sliding doors are ideal as conservatory partitions or room dividers for maximum accessibility with the low threshold option, and the mid-rail with letter plate option allows the doors to be used as front entrances.



2 pane in-line sliding doors



3 pane in-line sliding doors



4 pane in-line sliding doors

Beautiful doors make elegant homes



With all this flexibility, our doors work beautifully in any setting. And they're terrifically easy to live with, thanks to their easy-glide action, low threshold option and low maintenance construction.

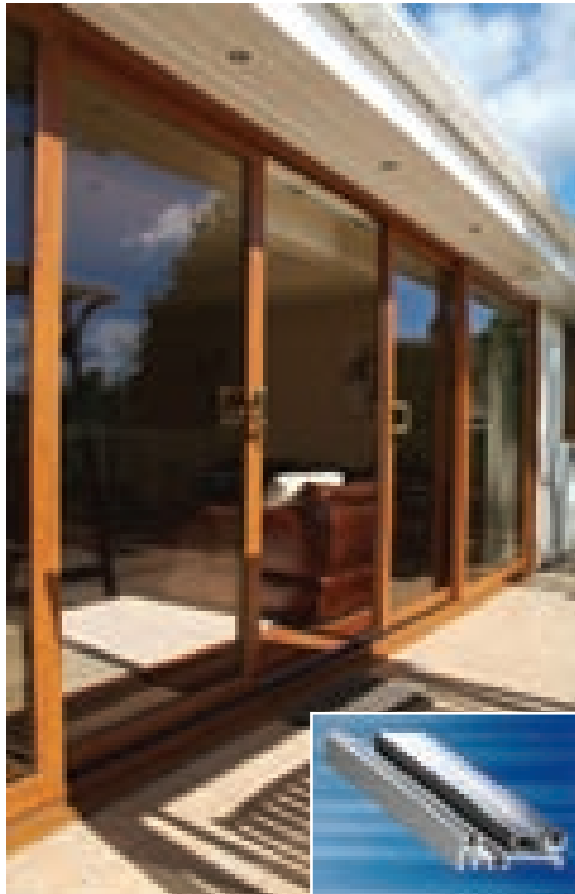
You'll benefit from some beautiful engineering. PatioMaster doors may be strong and secure, but with our glide system you can open or close them with a single finger. Poetry in motion!

From sitting rooms to conservatories, porches to pool houses, PatioMaster will complete your home, your way.

Safe and Warm

PatioMaster doors look fantastic, but the beauty's more than skin deep. The frames are made from impact resistant, thermally efficient PVC-U which is also easy to keep clean. These combined with built in seals and double glazed units offer excellent weather insulation. Trickle ventilation can also be provided to help air circulation through your home. They're designed to provide security and thermal efficiency to keep you safe and warm.

Safety first. Our doors are made from steel reinforced top quality PVC-U and they have a secure multipoint locking system with a built-in anti-lift mechanism to keep intruders at bay.



With interior glazing and additional reinforcement around the locks, our range is highly resistant to attack.

The entire system minimises draughts and features 28mm double glazing with thermally efficient safety glass, to keep you warmer in winter and cooler in the summer.

PatioMaster PVC-U doors won't peel, crack, absorb water or rot. And because they're made from the latest generation materials they'll look great for years to come, needing little maintenance and no painting.

There's also a strong environmental argument for using our PVC-U. It can be recycled up to ten times, and so your doors won't be going to landfill years from now, at the end of their lives.

PVC-U doors don't require environmentally damaging points or solvents either to maintain them - and their tremendous insulation properties keep emissions low.

Good for the environment. Great for your home.
It's the future of patio doors.



 **PatioMaster**[®]

IN-LINE SLIDING PATIO DOOR

About PatioMaster

PatioMaster is the UK's number one in-line sliding patio door supplier. They're the natural choice if you value quality, reliability and design.

All PatioMaster products are precision engineered in dedicated factories that are 100% focused on giving you a fantastic product that will enhance your home for years to come.

For more details, please go to www.patiomaster.co.uk



www.patiomaster.co.uk

PatioMaster cannot be held accountable for manufacture or installation by independent companies. All information in this publication is provided for guidance only and is given in good faith. As it is company policy to continually improve products, methods and materials, changes of specification may be made from time to time without prior notice. This statement does not affect your statutory rights. © PatioMaster